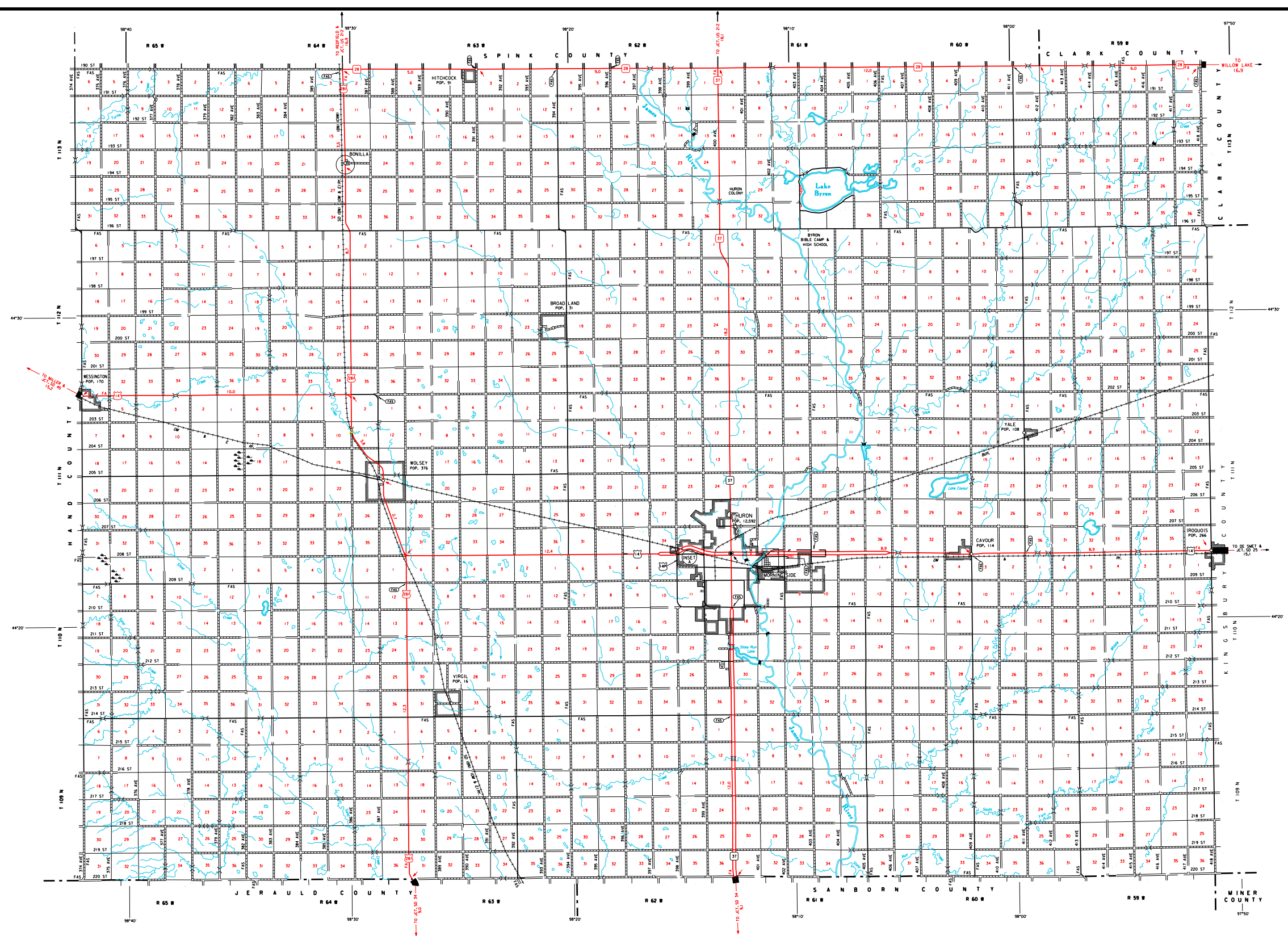
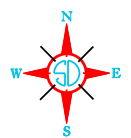
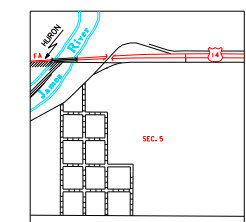
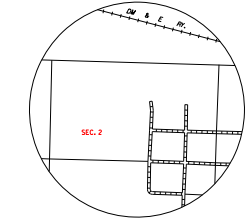
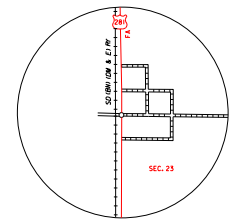


GENERAL HIGHWAY MAP  
BEADLE COUNTY  
SOUTH DAKOTA



LEGEND

- INTERSTATE HIGHWAY (FULL CONTROL OF ACCESS)
- U.S. NUMBERED HIGHWAY
- STATE NUMBERED HIGHWAY
- FEDERAL AID HIGHWAY SYSTEM
- FEDERAL AID SECONDARY HIGHWAY SYSTEM
- END OF FEDERAL AID DESIGNATED ROUTE
- UNIMPROVED ROAD
- GRAVEL OR STONE SURFACED ROAD
- HARD SURFACED ROAD
- DIVIDED HIGHWAY (WITH ELEVATION ROAD)
- INTERCHANGE
- HIGHWAY GRADE SEPARATION
- POINTS BETWEEN WHICH DISTANCES ARE MEASURED INDICATED THIS
- RAILROAD IN JURISDICTION
- TWO OR MORE TRACKS OF SEPARATELY OPERATED COMPANIES ON ADJACENT RIGHT-OF-WAY
- RAILROAD CROSSINGS
- RAILROAD BRIDGE
- RAILROAD MILE
- AIRPORT WITH SURFACED RUNWAYS
- MILITARY FIELD
- AIRPORT, COMPLETE FACILITIES (COMMERCIAL OR MUNICIPAL)
- AIRFIELD, LIMITED FACILITIES
- LANDING AREA OR STRIP (INCLUDING PRIVATE AIR FIELDS)
- AIRWAY LIGHT BEACON (GENERAL)
- NARROW STREAM
- RIDE STREAM (INTERMITTENT NAVIGATION)
- DRAINAGE DITCH (WASH)
- IRRIGATION DITCH
- RESERVOIR, POND OR LAKE
- RESERVOIR, WITH DAM
- DAM
- MARSH OR SWAMP LAND
- SOIL, PEEL, OR LINDING
- HIGHWAY BRIDGE (OVER 20 FT. IN LENGTH)
- HIGHWAY BRIDGE (CLOSELY SPACED)
- STEEL TRUSS BRIDGE
- CANTILEVER BRIDGE
- FORD - ROAD ESTABLISHED
- CONCRETE FORD
- CAUSEWAY
- CATTLE GUARD
- PROMINENT ELEVATION
- STATE LINE
- COUNTY LINE
- CONGRESSIONAL TOWNSHIP LINE
- SECTION LINE
- FEDERAL AND STATE RESERVATION BOUNDARY LINE
- MONUMENT (SMALL)
- COUNTY SEAT
- OTHER CITIES AND VILLAGES
- UNINCORPORATED VILLAGE OR AREA OF CONGESTED CULTURE
- INCORPORATED CITY OR VILLAGE (FIGURES INDICATE 1990 POPULATION)

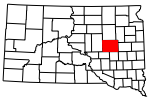


GENERAL HIGHWAY MAP  
**BEADLE COUNTY**  
SOUTH DAKOTA

prepared by the  
SOUTH DAKOTA DEPARTMENT OF TRANSPORTATION  
in cooperation with the  
U.S. DEPARTMENT OF TRANSPORTATION  
FEDERAL HIGHWAY ADMINISTRATION

SCALE  
0 1 2 3 4 5 MILES

2016



UNIVERSAL TRANSVERSE MERCATOR PROJECTION

RESTRICTION OF LIABILITY: The South Dakota Department of Transportation makes no warranty, promise or guarantee about the accuracy, completeness or timeliness of any data, information, or other content, or any part of it, that is incorporated by reference into this map. The Department of Transportation is not responsible for any errors or omissions of the data content, or any part of it, that is incorporated by reference into this map. The Department of Transportation is not responsible for any errors or omissions of the data content, or any part of it, that is incorporated by reference into this map. The Department of Transportation is not responsible for any errors or omissions of the data content, or any part of it, that is incorporated by reference into this map.

COPIES OF THIS MAP ARE AVAILABLE FOR PUBLIC USE AT A NOMINAL COST  
S.D. Department of Transportation  
Map Sales - Ph: 605/773 3269  
Harris, South Dakota 57507

GENERAL HIGHWAY MAP  
BEADLE COUNTY  
SOUTH DAKOTA