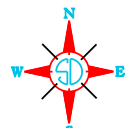
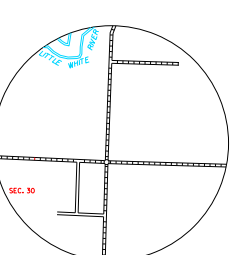
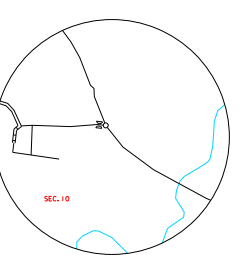
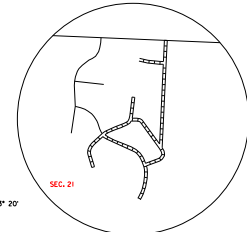


LEGEND

- INTERSTATE HIGHWAY FULL CONTROL OF ACCESS
- U.S. NUMBERED HIGHWAY
- STATE NUMBERED HIGHWAY
- FEDERAL AID HIGHWAY SYSTEM
- FEDERAL AID SECONDARY HIGHWAY SYSTEM
- END OF FEDERAL AID DESIGNATED ROUTE
- PRIMITIVE ROAD
- GRAVEL OR GRADED ROAD
- GRAVEL OR STONE SURFACED ROAD
- HARD SURFACED ROAD
- DIVIDED HIGHWAY (LEFT DRIVEWAY ROAD)
- INTERCHANGE
- HIGHWAY GRADE SEPARATION
- POINTS BETWEEN WHICH DISTANCES ARE MEASURED INDICATED THIS
- RAILROAD
- RAILROADS IN JUNCTION
- TWO OR MORE TRACKS OF SEPARATELY OPERATED COMPANIES OR SEPARATE RIGHT-OF-WAY
- RAILROAD CROSSINGS
- GRADE CROSSINGS
- RAILROAD ABOVE
- RAILROAD BELOW
- RAILROAD WITH SURFACED RUNWAYS
- MILITARY FIELD
- AIRPORT, COMPLETE FACILITIES (COMMERCIAL OR MUNICIPAL)
- AIRFIELD, LIMITED FACILITIES
- LANDING AREA OR STRIP INCLUDING PRIVATE AIR FIELDS
- AIRWAY LIGHT BEACON (GENERAL)
- NARROW STREAM
- WIDE STREAM (INTERNATIONAL NAVIGATION)
- DRAINAGE DITCH (MAIN)
- IRRIGATION DITCH
- RESERVOIR, POND OR LAKE
- RESERVOIR, WITH DAM
- DAM
- WASH OR STAMP LAKE
- DOCK, PIER, OR LANDING
- HIGHWAY BRIDGE (OVER 20 FT. IN LENGTH)
- HIGHWAY BRIDGES CLOSELY SPACED
- STEEL TRUSS BRIDGE LARGE
- CANTILEVER BRIDGE
- FOOD - ROAD ESCARPMENT
- CONCRETE FORD
- CAUSEWAY
- CATTLE GUARD
- PROMINENT ELEVATION
- STATE LINE
- COUNTY LINE
- SECTION LINE
- FEDERAL AND STATE RESERVATION BOUNDARY LINE
- MUNICIPALITY (SMALL)
- MUNICIPALITY (LARGE)
- OTHER CITIES AND VILLAGES
- UNINCORPORATED VILLAGE OR AREA OF CONCRETE CULVERT
- INCORPORATED CITY OR VILLAGE (FIGURES INDICATE 1990 POPULATION)

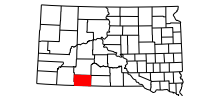


GENERAL HIGHWAY MAP
BENNETT COUNTY
 SOUTH DAKOTA

prepared by the
 SOUTH DAKOTA DEPARTMENT OF TRANSPORTATION
 in cooperation with the
 U.S. DEPARTMENT OF TRANSPORTATION
 FEDERAL HIGHWAY ADMINISTRATION

SCALE
 0 1 2 3 4 5 MILES

2016



UNIVERSAL TRANSVERSE MERCATOR PROJECTION

CADD PRODUCED BY
 CARTOGRAPHIC SECTION
 SOUTH DAKOTA DEPARTMENT OF TRANSPORTATION

RESTRICTION OF LIABILITY: The South Dakota Department of Transportation makes no claim, warranty, or representation as to the accuracy, completeness, or timeliness of the data and any liability for damages or losses of any kind, whether expressed or implied, arising from the use of this map, shall be the responsibility of the user. The Department of Transportation makes no warranty or representation as to the accuracy, completeness, or timeliness of the data and any liability for damages or losses of any kind, whether expressed or implied, arising from the use of this map, shall be the responsibility of the user.

COPIES OF THIS MAP ARE AVAILABLE FOR PUBLIC USE AT A NOMINAL COST
 S. D. Department of Transportation
 Map Sales -- Ph: 605/773-3249
 Permit: South Dakota 2016