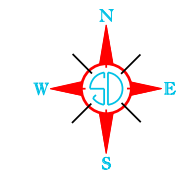
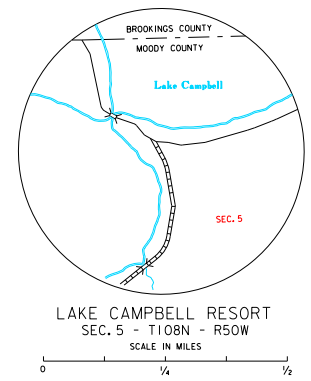
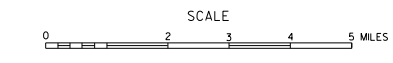


**LEGEND**

INTERSTATE HIGHWAY (FULL CONTROL OF ACCESS)		NARROW STREAM	
U.S. NUMBERED HIGHWAY		WIDE STREAM (INTERMITTENT NAVIGATION)	
STATE NUMBERED HIGHWAY		DRAINAGE DITCH (MAIN)	
FEDERAL AID HIGHWAY SYSTEM		IRRIGATION DITCH	
FEDERAL AID SECONDARY HIGHWAY SYSTEM		FAS RESERVOIR, POND OR LAKE	
END OF FEDERAL AID DESIGNATED ROUTE		RESERVOIR, WITH DAM	
		DAM	
		MARSH OR SWAMP LAND	
PRIMITIVE ROAD		DOCK, PIER, OR LANDING	
GRAVEL AND DRAINED ROAD		HIGHWAY BRIDGE (OVER 20 FT. IN LENGTH)	
GRAVEL OR STONE SURFACED ROAD		HIGHWAY BRIDGES CLOSELY SPACED	
HARD SURFACED ROAD		STEEL TRUSS BRIDGE LARGE	
DIVIDED HIGHWAY (WITH FRONTAGE ROAD)		CANTILEVER BRIDGE	
INTERCHANGE		FORD - ROAD ESTABLISHED	
HIGHWAY GRADE SEPARATION		CONCRETE FORD	
POINTS BETWEEN WHICH DISTANCES ARE MEASURED INDICATED THIS		CAUSEWAY	
		CATTLE GUARD	
RAILROAD		PROMINENT ELEVATION	
RAILROADS IN JUNCTURE POSITION		STATE LINE	
TWO OR MORE TRACKS OF SEPARATELY OPERATED COMPANIES ON ADJACENT RIGHT-OF-WAY		COUNTY LINE	
		CONGRESSIONAL TOWNSHIP LINE	
RAILROAD CROSSINGS		SECTION LINE	
GRADE CROSSINGS		FEDERAL AND STATE RESERVATION BOUNDARY LINE	
RAILROAD ABOVE		MONUMENT (SMALL)	
RAILROAD BELOW		COUNTY SEAT	
		OTHER CITIES AND VILLAGES	
PORT WITH SURFACED RUNWAYS		UNINCORPORATED VILLAGE OR AREA OF CONTESTED CULTURE	
		INCORPORATED CITY OR VILLAGE (FIGURES INDICATED 1990 POPULATION)	
MILITARY FIELD			
PORT, COMPLETE FACILITIES (COMMERCIAL OR MUNICIPAL)			
AIRFIELD, LIMITED FACILITIES			
LANDING AREA OR STRIP INCLUDING PRIVATE AIR FIELDS			
AIRWAY LIGHT BEACON (GENERAL)			



GENERAL HIGHWAY MAP  
**MOODY COUNTY**  
**SOUTH DAKOTA**  
 prepared by the  
 SOUTH DAKOTA DEPARTMENT OF TRANSPORTATION  
 in cooperation with the  
 U.S. DEPARTMENT OF TRANSPORTATION  
 FEDERAL HIGHWAY ADMINISTRATION



2016



UNIVERSAL TRANSVERSE MERCATOR PROJECTION

RESTRICTION OF LIABILITY: The South Dakota Department of Transportation makes no claims, promises or guarantees about the accuracy, completeness, or currency of the data and expressly disclaims liability for errors and omissions of the data content. No warranty of any kind, implied, expressed or statutory, including but not limited to the warranties of non-infringement of third party rights, title, merchantability and fitness for a particular purpose is given with respect to this data.

COPIES OF THIS MAP ARE AVAILABLE FOR PUBLIC USE AT A NOMINAL COST  
 S. D. Department of Transportation  
 Map Sales - Ph: 605/773 3249  
 Pierre, South Dakota 57501